

## Piping & Vessel Corrosion Imaging

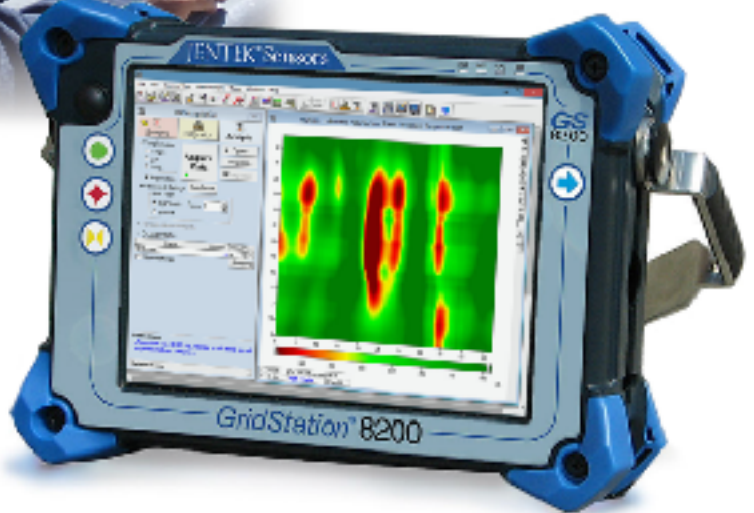
### Refinery Piping & Pipelines

Rapid, high-resolution imaging of internal and external corrosion through insulation (CUI) and weather jacket using MR-MWM®-Array technology.



#### GridStation® 8200

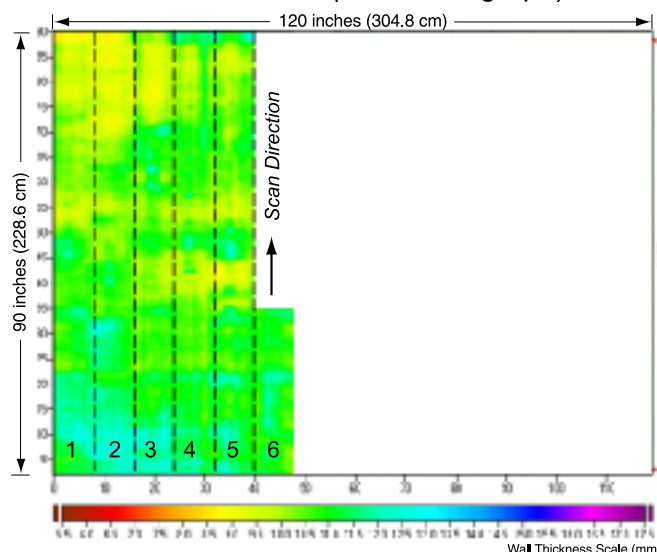
- 19 to 119 channel standard configurations
- 100× faster than GridStation 8000
- 10× improved signal-to-noise
- DC - 20MHz operating frequency
- Windows® 8 operating system
- Intel® Core™ i7, 3rd gen
- Multi-touch screen



### Vessel Corrosion Imaging Under Fireproofing

Wall Thickness Images from Multiple MR-MWM®-Array Scans

Partial Scan (See Photograph)



Completed Scan

